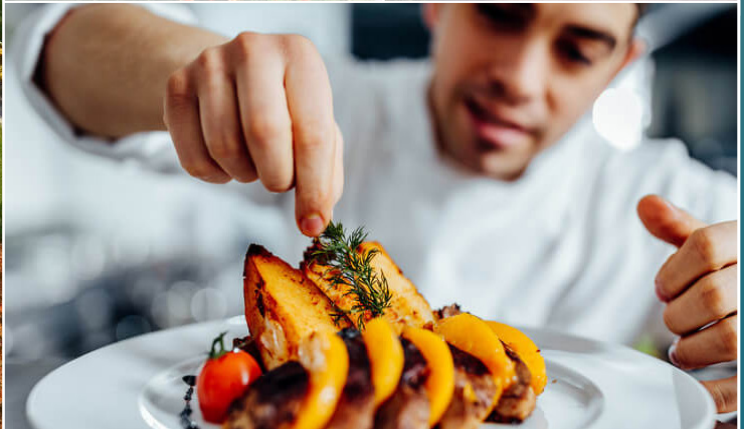
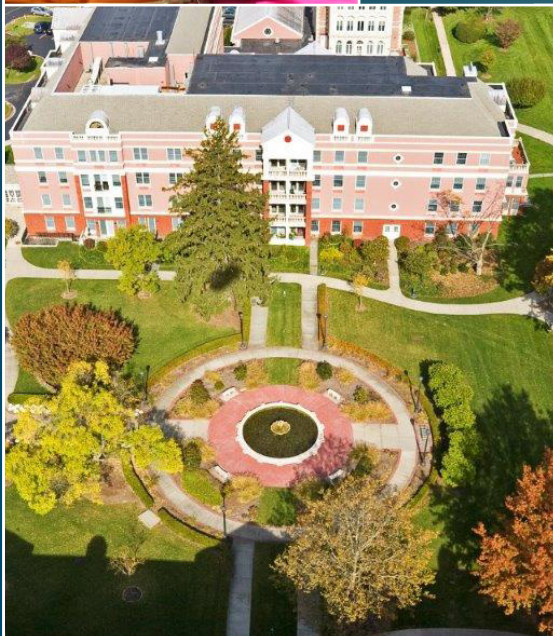




LIVE YOUR  
BEST LIFE AT  

---

The Osborn



An aerial, historical-style illustration of a town built along a river. The town features numerous red-brick buildings, some with tall chimneys, and a grid-like street pattern. A river winds through the town, with several bridges and docks. In the background, there are rolling green hills and a large body of water with many sailing ships. The overall scene depicts a bustling 19th-century industrial or mercantile town.

# The Osborn TRADITION

For founder Miriam Osborn, ensuring support and care for others was more than just a dream. She directed that a portion of her estate be left to realize her vision. Through friend and attorney John Sterling, and with the help of renowned architect Bruce Price, The Osborn community was created.

**Since we first opened our doors more than 100 years ago**, we have sustained a reputation as the premier not-for-profit senior living community in Westchester. The Osborn is accredited by CARF, which is widely recognized as the highest standard in senior living excellence. Additionally, our A category Fitch rating attests to our fiscal strength.

Constantly innovating to exceed the needs and expectations of older adults, The Osborn offers an engaging lifestyle, enhanced with enriching activities across the continuum of care.

We invite you to experience our extraordinary community and discover life at The Osborn.

**The Osborn Lifestyle**

**Independent Living**

**Assisted Living**

**Memory Care**

**Skilled Nursing**

**Rehabilitation**

**Home Care**

**Safety & Security**

# The Osborn Lifestyle

An Experience Like No Other.

The stunning setting of The Osborn's 56-acre campus, located on Theall's Hill in Rye, is just one reason for our century-long appeal. The real beauty lies in The Osborn's services, care, amenities, and the flexibility you have to live the lifestyle that fits your personality and can offer you a health care plan that is specific to your needs.

WellSpring, The Osborn's resident-centered wellness approach, is designed to inspire everyone in our community to enjoy life to the fullest by embracing the seven dimensions of wellness: Physical, Social, Intellectual, Spiritual, Emotional, Occupational, and Environmental. We offer a variety of programs that foster a sense of well-being and promote a healthy life.

Located just 40 minutes by Metro-North Railroad from Manhattan, close to the Long Island Sound and 10 minutes from The Westchester Mall and Greenwich, Connecticut, The Osborn appeals to people with myriad interests.

One monthly fee covers utilities, maintenance and housekeeping, and meal plans so you can enjoy your lifestyle. Freedom, choices, and flexibility — that's true beauty.



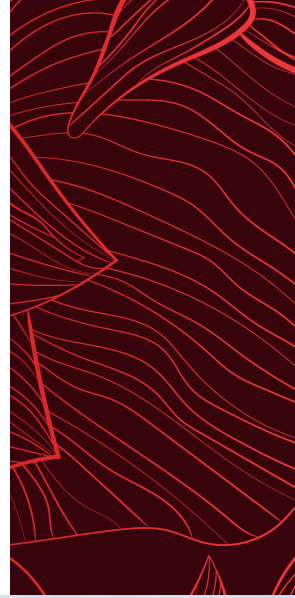
# ENRICHED



Our mission is to provide exceptional living communities and health care, assure long-term financial security, and maintain our commitment to charity.

# Independent Living at Sterling Park

Live Your Best Life



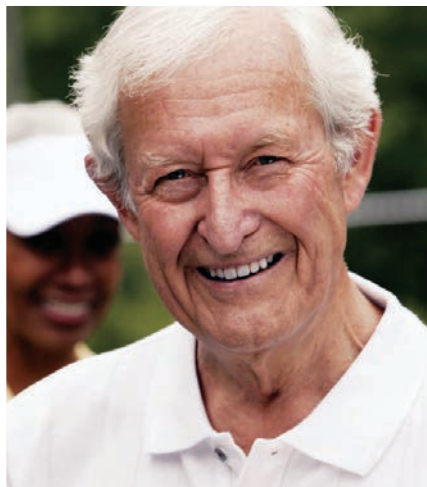


Sterling Park Independent Living at The Osborn means modern independent living and an active lifestyle. The Osborn WellSpring program means you can choose from the many inspiring activities to maintain wellness and be engaged with the world. You can enrich your life and enjoy socializing in keeping with your personal style.

The Osborn offers a wide variety of floor plans for modern, spacious apartments and single-story garden homes with a refundable entrance fee.

Rental apartments are also available in the main Osborn building for a monthly payment with no entrance fee required.

# WELLNESS



Our WellSpring program's broad array of social, intellectual, cultural, and fitness opportunities means you have plenty of stimulating ways to spend your free time.



## Assisted Living

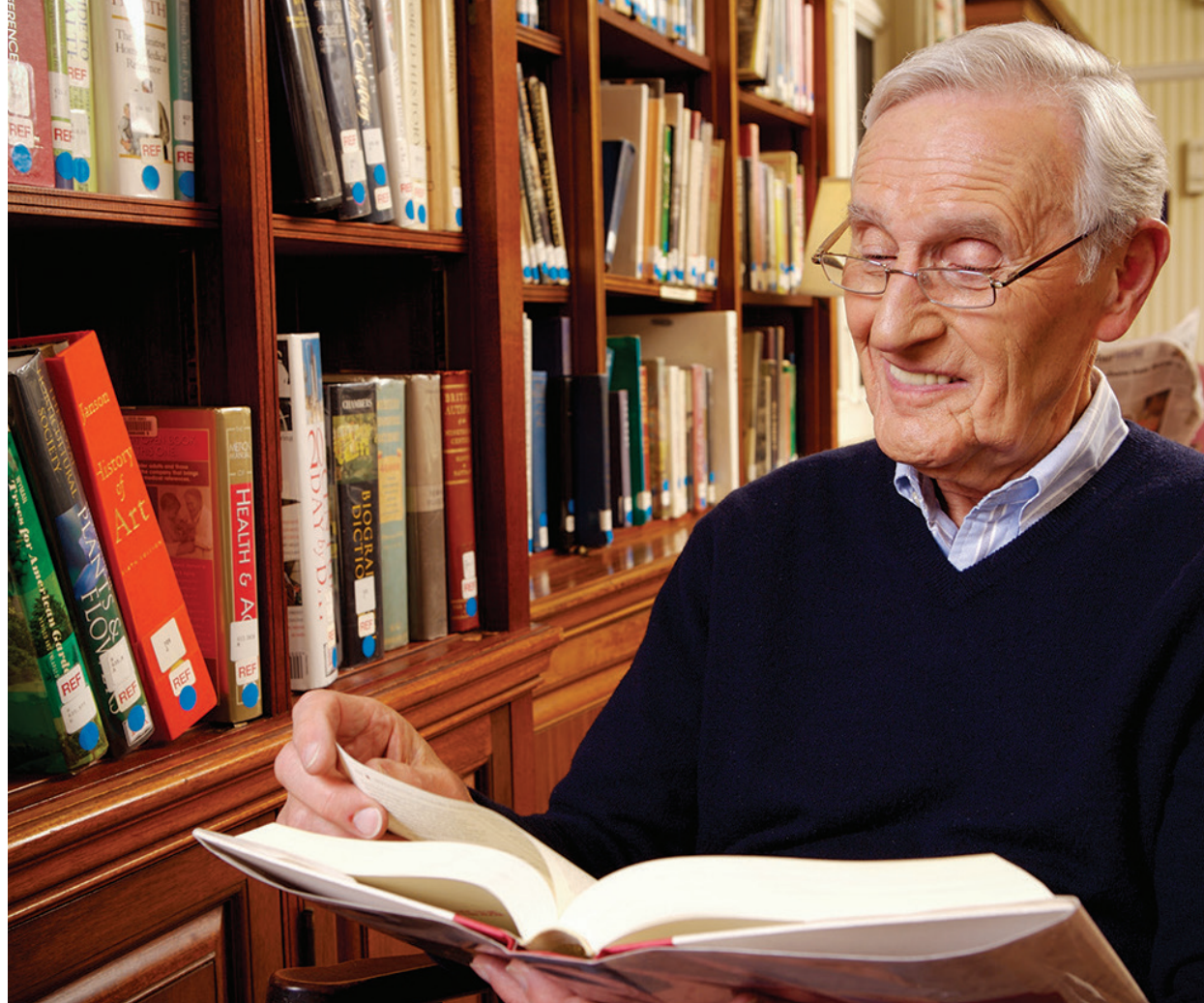
Exceptional Care with  
a Personal Touch.

Our assisted living program promotes maximum independence, wellness, and safety. A dedicated team of professionals ensures your physical, social, and intellectual needs are met. Whether you need once-a-day help or more, your Assisted Living Nurse Care Manager will tailor a plan to your needs which your personal Care Coordinator will provide.

Assisted Living is available through direct admission with no entrance fee. You will have a private apartment with full bath and kitchenette where family and friends are welcome to visit. In addition to exceptional personalized care, there is a full calendar of activities designed to engage and encourage wellness, as well as access to many services and amenities at The Osborn.







# AMENITIES

Enjoy social events, libraries, the cinema, our **perennial gardens** and gorgeous walking paths through expansive grounds, with help from our caring staff.

# The H.O.P.E. Center Memory Care

Positive, Personal Attention





Homelike. Optimism. Passion. Empathy. In a beautiful, award-winning setting, the H.O.P.E. Center is designed for individuals with memory-impairing conditions who can accomplish most of their daily activities and would benefit from professional support in a social, neighborhood-style setting. We take a person-centered approach to help your loved ones maintain their individuality by pursuing their interests in a safe, therapeutic environment.

Our dedicated, compassionate staff develops close relationships with residents and their families. By understanding each person's perspective and appreciating their feelings and motivations, the staff and residents create positive experiences each day.

# PERSONAL

The **H.O.P.E. Center** promotes independence and choice in an award-winning and secure setting.

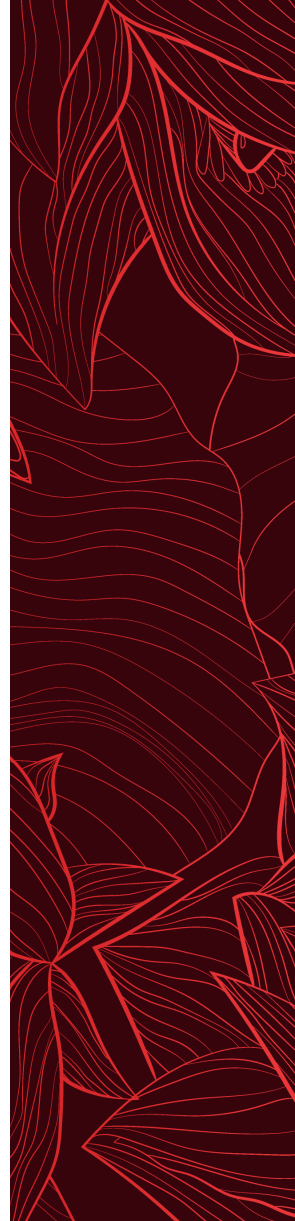


# Skilled Nursing at The Pavilion

Excellence in Skilled Nursing.

The exceptional staff and warm environment at The Pavilion skilled nursing center ensure you or your loved one make the most of every day when short-term inpatient or long-term care is needed. Unlike other skilled nursing facilities, The Pavilion is distinguished by our person-centered 24/7 care program, which is provided by well-trained, empathetic staff. They bring warmth, respect, and professionalism to affirm each resident's dignity. Each day offers wellness opportunities that enrich the mind, body, and spirit. Many of our residents' families tell us that, thanks to the care and support of the Pavilion staff, they are enjoying time with their loved ones more than ever.

The Pavilion is Medicare-certified and accessible through direct admission with no entrance fee, providing short-term rehabilitation, long-term continuing care, respite care, and hospice care.



# CARING

The Pavilion features furnished private rooms and bathrooms, and a range of health-related services provided by board-certified physicians, nurses, therapists, social workers and a dietitian.



# Rehabilitation at The Pavilion

Getting You Back to Your Life.





Using the latest techniques, technology, and personalized programs, the goal of The Osborn Rehabilitation Center is to help you regain strength, range of motion, and self-confidence, so you can return home following surgery, injury, or illness. Physical, occupational, and speech therapists work with you along with our professional nursing staff, and our on-site medical team from Northeast Medical Group, part of the Yale-New Haven Health System.

We provide Medicare-certified short-term inpatient rehabilitation, and outpatient rehabilitation with a doctor's prescription. Services are available with direct admission with no entrance fee.



The Osborn's **personal approach and state-of-the-art therapies** help you recover, so you can return to your life at home.

# Osborn Home Care

## Exceptional Personal Care in Your Own Home

Osborn Home Care is a New York State licensed agency, staffed by Osborn Home Care Nurses and Certified Home Health Aides. Residents of Westchester County can receive in their own homes a range of exceptional care services similar to those we provide on The Osborn campus.

A Registered Nurse will meet with you at your home to develop your custom care plan and supervise your personal Home Health Aide who will provide your care on the schedule you choose. A member of our nursing staff is available to you 24/7, should you require additional assistance.

In Connecticut, our state-licensed homemaker-companion agency provides professionally trained aides who can help with personal care, meal preparation, light housework, calendar management, and safety guidance according to a personalized care plan provided by your Osborn Home Care Manager (CT license HCA. 0000933).



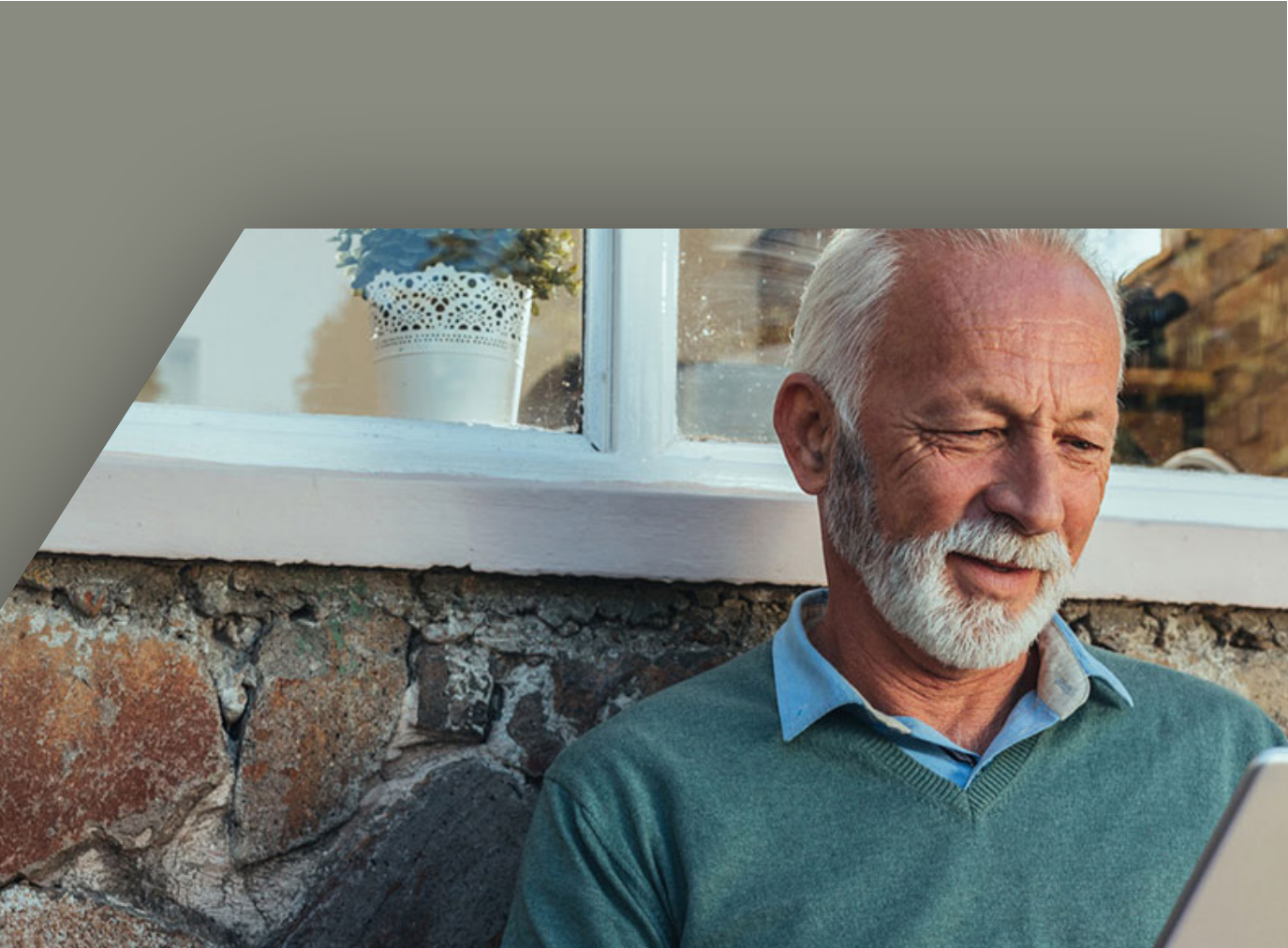


# Safety & Security

## Rest Assured at The Osborn

The Osborn follows the recommendations of both the Centers for Disease Control and Prevention (CDC) and the New York State Department of Health (NYSDOH) as they pertain to public health issues such as flu and COVID-19. In early 2021, The Osborn mandated COVID-19 vaccinations for employees. As a result, approximately, 99% of Osborn staff and residents are now vaccinated. You can rest assured that your well-being is a high priority to everyone at The Osborn.

Our 24-hour campus security staff is here should you have an emergency or require assistance night or day. Help is just a phone call away. Our gatehouse at the entrance of The Osborn is manned around the clock and adds an additional level of reassurance for residents.



# This Is Your Osborn

We invite you to see for yourself why The Osborn has been Westchester's premier senior living community since 1908. For more information about The Osborn or to arrange a personal tour, please call us at (888) 9- OSBORN or visit us at [theosborn.org](http://theosborn.org).

## The Osborn Main Number

(914) 925-8200

## Sterling Park at The Osborn

(914) 925-8243

## Assisted Living at The Osborn

(914) 925-8243

## The Osborn Pavilion

(914) 925-8203  
Short-term Rehabilitation  
and Long-term Care

(914) 925-8366  
Outpatient Rehabilitation

## The H.O.P.E. Center

(914) 925-8243 Memory Care

## Osborn Home Care

(914) 925-8221  
Westchester County

(203) 641-7683  
Fairfield County

The Osborn is a not-for-profit 501c3 charitable organization accredited by CARF.

The Osborn Pavilion is Medicare-certified and accepts many third-party insurance plans and private pay. It is not a Medicaid provider.

## The Osborn Non-Discrimination Policy

In compliance with federal and state civil right laws and regulations, The Osborn does not discriminate based on age, race, creed, color, national origin, handicap/disability, sex, sexual preference, gender identity/expression, marital status, or sponsor in admission, retention, and care of its residents. The Osborn treats all prospects and residents on this non-discriminatory basis.

## The Osborn

101 Theall Road  
Rye, NY 10580

[www.theosborn.org](http://www.theosborn.org)